

Providing Competitive Railway Systems
for Increased Rail Traffic



Introduction

Growing volumes of transport in all modes are reality across Europe. Rail is no exception to this. All segments of rail transport have experienced an overall growth during recent years. This is true for urban and regional rail, as much as for conventional and high-speed or freight.

In comparison to other transport modes, especially road, rail is also uniquely placed to reconcile this growing demand for sustainable transport solutions. Rail has the great benefit of being the most environmentally friendly mode of transport. In comparison to CO₂ emissions from road transport, those of rail are relatively negligible.

UNIFE as the Association of the European Rail Industry is committed to making the technological innovations and benefits of rail transport more widely known. We aim to enhance the sector's competitiveness through research coordination and through working for better recognition of the benefits of rail transport at both EU level and wider public.

A handwritten signature in black ink, reading "Michael Clausecker".

Michael Clausecker

UNIFE Director-General



What is UNIFE?

UNIFE represents the European rail supply industry. It has been based in Brussels since 1992, working on European Transport matters.

Since then, the association has established itself as a trusted partner of the European Institutions in all matters related to rail and transport. With its 24 permanent employees, it has become an important trade association in Brussels.

UNIFE represents the interests of over 60 large and medium-size companies in this sector. A further 1,000 suppliers of railway equipment are associated through their national associations.

The total accessible world market for the rail industry in 2007 was estimated at more than EUR 86 billion.

UNIFE members represent the entire sector. System integrators as well as railway infrastructure companies, rolling stock and subsystem suppliers as well as signalling companies work together in the framework of UNIFE. Our members are committed to providing the best technology in order to meet the challenges arising from climate change and growing transport volumes.

System Integrators

UNIFE system integrators have the capacity to provide turnkey railway systems: from the infrastructure to rolling stock and signalling. They provide these to the entire world.

Rolling Stock and Subsystems

UNIFE members produce not only electric and diesel locomotives, but also regional, intercity and high-speed trains, as well as freight wagons for all types of cargo.

UNIFE also represents subsystem manufacturers from the wheels to the pantographs including door systems, couplers, air-conditioning units, on board signalling equipment and all the necessary equipment vital for trains.

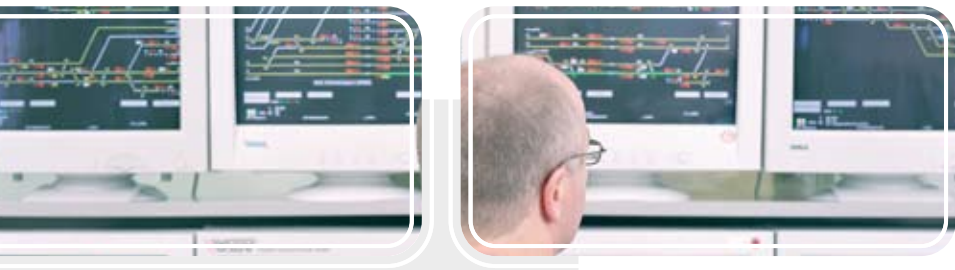
Infrastructure

UNIFE members today offer the world's best capacities for rail infrastructure: from the supply of rail, track components, installation and maintenance equipment to the provision, maintenance and renewal of integrated track systems. Suppliers and contractors deliver and maintain high-quality track infrastructure in Europe and around the world.

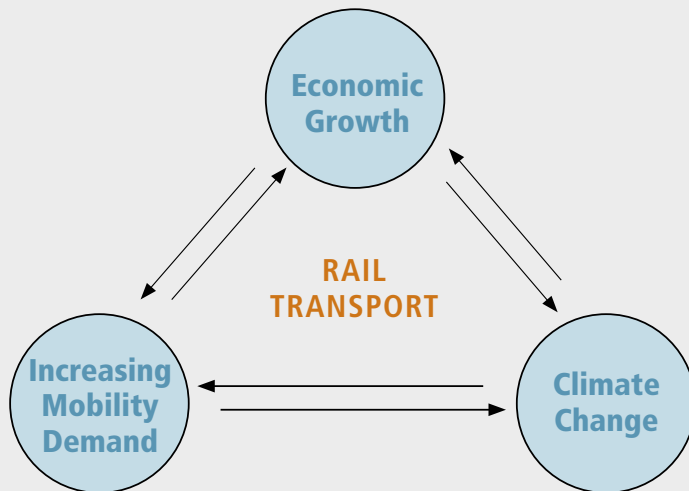
Signalling

Our members also produce signalling systems that help to increase the capacity of the railway system as a whole. They are equally committed to developing ERTMS, a truly European system that should eventually overcome the differences between national signalling systems in order to create a truly European Railway system!





UNIFE Mission



Providing Competitive Railway Systems for Increased Rail Traffic.

5 objectives to achieve the mission:

- Promote rail transport through dialogue with EU institutions and all important stakeholders
- Lobby for rail issues by leading initiatives with National Rail Supply Industry Associations
- Deliver railway interoperability & standardisation for improved LCC & RAMS
- Ensure European rail supply industry leadership through joint research & innovation
- Convince the public that rail transport is the favourable solution for the 21st century challenges of increased mobility, economic growth and environmental protection



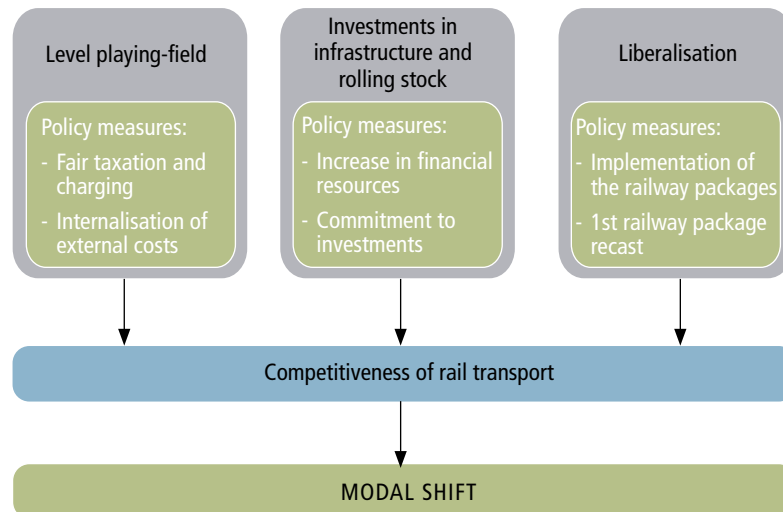
1 What does UNIFE do to achieve its objectives?

EU Public Affairs: A political framework for modal shift

Through its Public Affairs activities, UNIFE seeks to promote a political framework that is conducive to sustainable transport policies, by pushing rail transport as the most environmentally friendly mode of transport in particular.

Given the challenges that the transport sector is currently facing and will continue to face in the future, an altered political framework that favours a modal shift from road to rail is needed.

The UNIFE Public Affairs strategy to achieve this goal is based on **three pillars**:



1. Different modes of transport need to reflect their real costs to the environment and society. UNIFE therefore supports any attempt to internalise external costs of transport. We equally campaign for a fair taxation and charging of all modes of transport, so as to reflect the real costs of transport to society without unduly favouring modes that may cause high levels of pollution and CO₂ emissions.
2. UNIFE promotes the use of revenues from infrastructure charging for rail infrastructure investments, including urban rail. A strong focus also lies on the European regional policy which should take a strong focus on rail infrastructure investment, especially in the new EU Member States. UNIFE seeks support for the TEN-T network.
3. UNIFE strongly supports the EU's efforts at liberalising the European railway markets. This should allow for more competition on the networks, enhance the efficiency of European rail and thus make it more attractive both for freight and passengers.

In order to achieve these goals, UNIFE works closely with the European institutions, its national associations and other railway associations in Brussels.

UNIFE accompanies the legislative processes concerning rail from the beginning to the end. We make the rail sector's voice heard in the process, so as to ensure favourable legislative outcomes that strengthen the arguments for modal shift.

2

EU Research: Management and Co-ordination of EU-funded Research Projects

Joint R&D activities at a European level are vital to ensure the necessary level of technical interoperability and standardisation. They allow for the enhancement of the railway system in a competitive global market.

UNIFE supports its members via the management and coordination of their R&D activities at European level.

Focussing on pre-competitive research, we enable companies to pave the way for the development of competitive products and technologies. UNIFE supports all initiatives that have a good potential for market uptake.

Six permanent UNIFE managers steer and coordinate European funded research projects, such as Modtrain, Modbrake, Modurban, Integrail, Railenergy through the different phases of the project application, execution and dissemination.

UNIFE detains a leadership role in ERRAC, the European Rail Research Advisory Council. This European Technological Platform for rail research has an advisory role towards the European Commission in defining rail research priorities.

Within the ERRAC framework, the rail sector organisations UNIFE, UIC, CER and UITP together with leading European scientists in railway research have agreed on a «Joint Strategy for European Rail Research – 2020. “Towards a Single European Railway System.».

This strategy is based on the idea that joint research on the implementation of rail interoperability is key to achieving a complete Single European Railway System.

For example, UNIFE and its members submitted research proposals for the implementation of the ERRAC strategy. They were able to secure funding from the European Commission under the 6th framework programme of around EUR 115 million over a 5 year period.

On all technical activities close cooperation is maintained with the EU institutions.

Today, UNIFE is recognised, both by the EU institutions and by the rail sector, as the key player in every valuable European rail research project.





3

EU Standardisation and Harmonisation in the Rail Sector

UNIFE has considerably strengthened its organisation for the management of standardisation, European technical regulation and research. This evolution over the past number of years has the clear objective of coordinating the efforts in these three areas, towards a better interoperable and even more environmentally friendly European railway transport system.

UNIFE covers all the product areas relevant for standards and regulation: from Rolling Stock to Signalling and Infrastructure – the entire railway system!

On the regulatory side, UNIFE also collaborates with the other supporting bodies of the European Railway Agency (ERA) to develop common positions on the drafting of the regulatory documents generated by the ERA, the Technical Specifications for Interoperability or TSIs.

These TSIs are key legal documents to improve seamless cross-border operations in Europe.

To this effect, the network of UNIFE Topical & Mirror groups (expert groups in charge of promoting UNIFE's voice at the ERA or European Standardisation Organisations such as CEN, CENELEC, and ETSI) has strongly evolved over the past few years, with now over 120 active experts.

For example, UNIFE is actively contributing to the drafting of the following new conventional rail TSIs: Passenger Rolling Stock, Energy, Infrastructure, Operations, Wagons TSI revision. Other key documents will include Telematics Applications for Passengers (TAP), Certification of Maintenance Workshops, recommendations of Common Safety Methods (CSM) etc...

Through UNIFE, **members can voice their positions at the highest level throughout Europe – a must for any company with European and global ambitions!**



4 IRIS - The Global Quality Standard for the Railway Industry managed by UNIFE

IRIS is a globally recognised standard for the evaluation of business management systems unique to the railway sector. IRIS is headed by UNIFE and complements the ISO 9001 quality standard.

By implementing IRIS, cost reduction as well as efficient and effective business processes can be achieved throughout the entire supply-chain.

The aim of IRIS is to create a win-win situation where all stakeholders benefit from transparent requirements that are acceptable to all participants:

- Equipment manufacturers benefit from a better quality and visibility of their products;
- System integrators benefit from the uniform quality standard between their sites;
- Operators benefit from the quality improvements along the entire supply chain. As a result, quality, safety and reliability as well as business management processes of the industry are greatly enhanced.

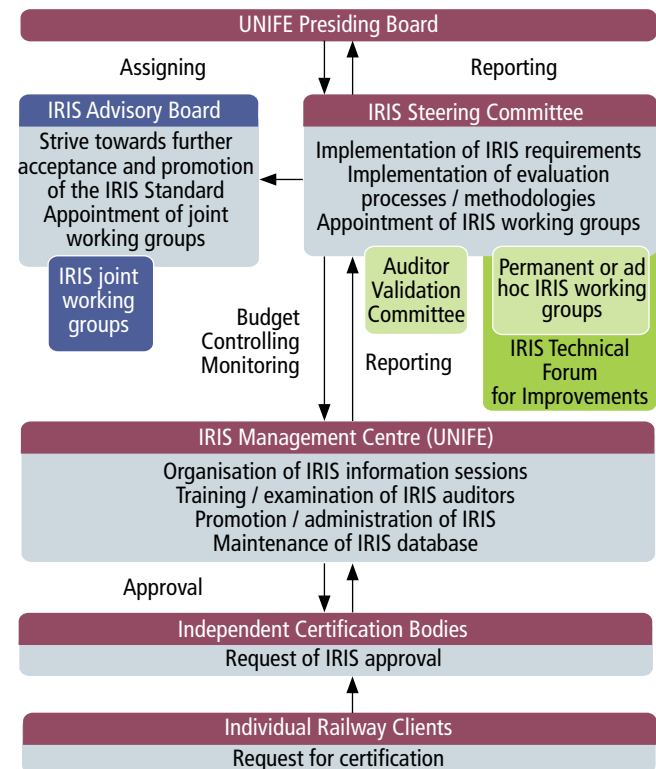
Confidentiality

The IRIS certification process is entirely confidential; neither sensitive business information, nor finance or performance management form part of the evaluation. Likewise, detailed results of the audits are only published with the consent of the company concerned.

IRIS Management Centre

The IRIS team is responsible for the promotion of IRIS and the daily business linked to the database, trainings and answering customer requests.

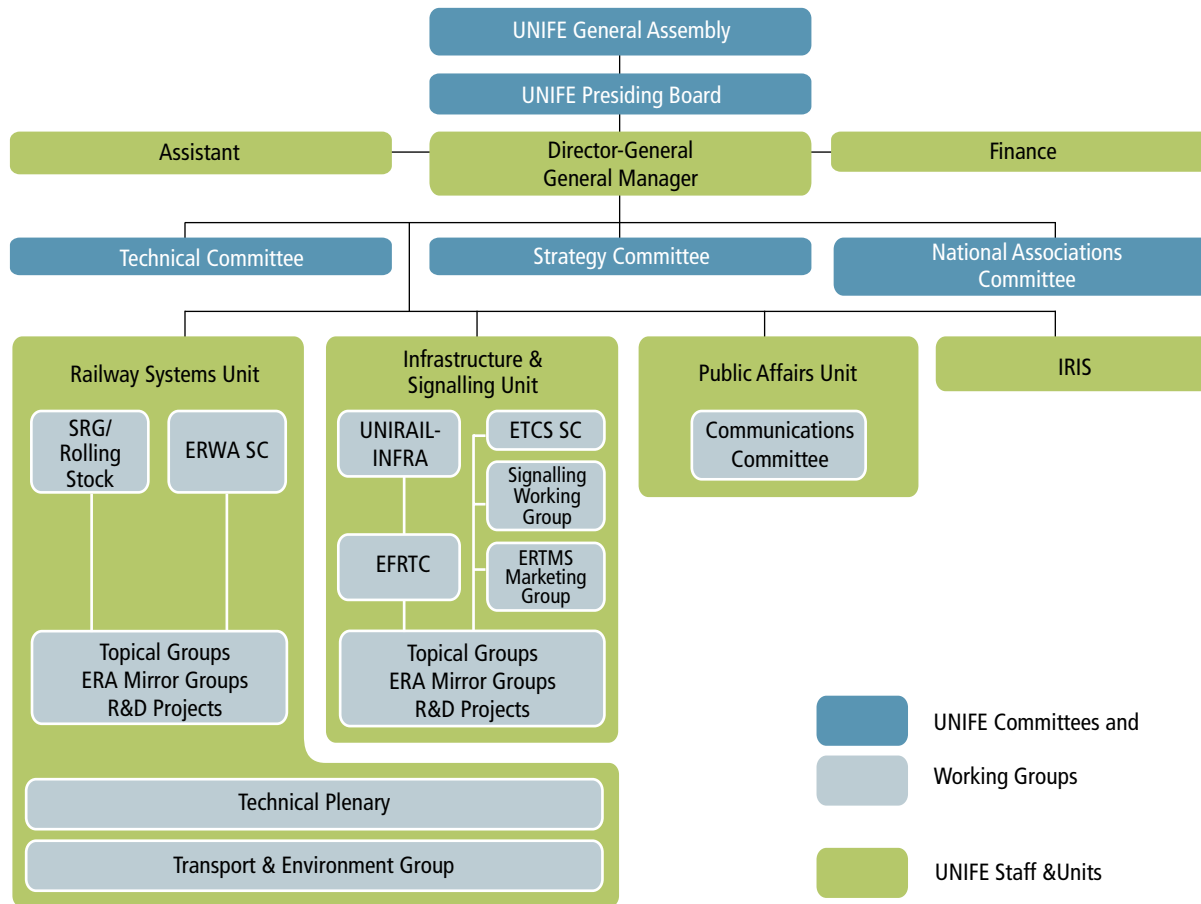
IRIS structure



For more on IRIS, visit www.iris-rail.org



UNIFE Structure



- SRG: Standard and Regulation Group
- ERWA: European Railway Wheels Association
- ERA: European Railway Agency
- EFRTC: European Federation of Railway Trackworks Contractors
- ETCS SC: European Train Control System Steering Committee
- IRIS: International Railway Industry Standard

- UNIFE Committees and
- Working Groups
- UNIFE Staff & Units

UNIFE Members

(September 2008)

ArcelorMittal
Alcan Extruded Products
Alstom Transport
Altpro
Amurrio Ferrocarril y Equipos
Ansaldo STS
AnsaldoBreda
Astra
AZD Praha
Balfour Beatty Rail
Bochumer Verein Verkehrstechnik
Bombardier Transportation
Bonatrans Group
CAF
Colas Rail
Corus Rail Products
Deuta-Werke
DuPont Safety Resources
EKE-Electronics
Electro-Motive Diesel
Eliop

Elta
Faiveley Transport
Far Systems
Firema Trasporti
Frenoplast
Funkwerk Information Technologies
GE Inspection Technologies
GE Transportation Rail
GHH Valdunes
Greenbrier Europe
Harting
HaslerRail
Invensys Rail Group
Knorr-Bremse
Kontron
Lucchini Sidermeccanica
Magliola Antonio & Figli
Matisa Matériel Industriel
Mer Mec
Moravia Steel
Radsatzfabrik Ilsenburg

Rail.one
Saft
Schaltbau
Scheidt & Bachman
Sécheron
Selectron
Siemens Mobility
Sigma Coachair Group
SKF
Skoda Transportation
Southco
Stadler-Fahrzeuge
Talgo
Thales Rail Signalling Solutions
Unicontrols
Verint
Voestalpine
Voith Turbo
Vossloh
VÜKV



Associated members

(September 2008)

AARI (Austria)
ACRI (Czech Republic)
Agoria (Belgium)
AIF (Romania)
ANIE/ASSIFE(Italy)
CEMAFE (Spain)
Freight Cars Producers Union (Community of Independent States)
Danish Railway Group (Denmark)
FIF (France)
HRI (The Netherlands)
MAFEX (Spain)
RIA (United Kingdom)
SIRTS (Poland)
Swedtrain (Sweden)
Swissrail (Switzerland)
UCRIFER (Italy)
VDB (Germany)
ZVEI (Germany)

EFRTC (European Federation of Railways Trackworks Contractors)



Benefits of UNIFE Membership

By being a member of UNIFE your company benefits from:

- **High-level representation:** We defend the interests of the rail supply industry in Brussels and at European level
- **The opportunity to influence important decisions** being made in Brussels
- **Networking opportunities** on a truly European scale
- **Participation in UNIFE working groups and UNIFE-led research projects**
- **Access to a wide range of technical and political up-to-date information**

