

ERRAC General presentation



Dan Otteborn, Vice-Chairman of ERRAC

Innotrans
UNIFE/UIC Research stand
Berlin

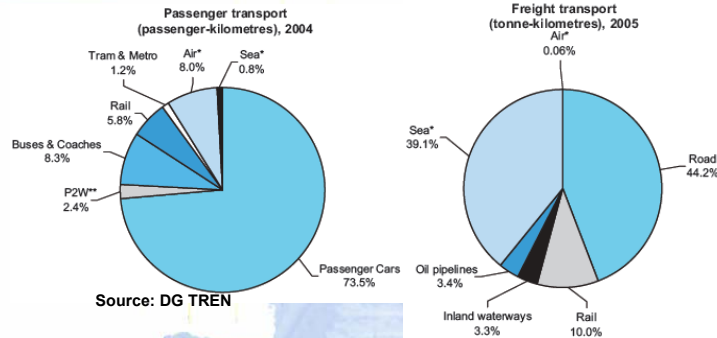
1

Europe of 21st century depends on the availability of an efficient transport sector

- ❑ **The European Commission in 2001 looked for a real change in the Common Transport Policy:**
 - ❑ the 2001 Transport White Paper set the new objectives for it: restoring the balance between modes of transport, activating a needed modal-shift and generally supporting a real sustainable European transport mode for the future.
- ❑ **In the future, an enlarged European Union could count up to 28 Members and total a population of 560 millions inhabitants:**
 - ❑ Move passengers and freight by train is the true sustainable measure to solve congestion, pollution and global warming problems
 - ❑ Mobility in urban areas is also critical: transport equipment (infrastructure and rolling stock) are decisive for a balanced economic and social development of urban and metropolitan areas.

2

The European transport landscape and the importance of rail R&D investments



Investments on innovation:

- ❑ European Rail Supply industries: **€1000 million p.a. in competitive R&D**
- ❑ Railway operators and infrastructure managers: **€250 million p.a. in R&D**
- ❑ EU-funded R&D projects under FP6 between 2000 – 2006 about **€150 million granted to joint railway research.**

3

ERRAC history

Set up in 2001 with the ambitious goal – embracing the Transport White Paper objectives – of creating a single European body able to contribute to the revitalisation and the competitiveness of the European rail sector through more innovation and more co-ordinated research activities.

■ *a unique body bringing together:*

- ❑ **Railway undertakings**
- ❑ **Infrastructure companies**
- ❑ **Urban and regional transport operators**
- ❑ **Manufacturing industry**
- ❑ **Representatives of the EU Member States**
- ❑ **European Commission**
- ❑ **Customer groups**
- ❑ **Consultants and academic institutions**



With the aim of achieving consensus on priorities for railway research and guiding research efforts towards common strategy

4

ERRAC objectives and activities have been

Enhancing collaborative European rail research by:

- ❑ Building consensus among stakeholders
- ❑ Improving synergies between EU, national and private rail research (identify priorities)
- ❑ Strengthening and re-organizing research and development efforts (avoid duplications)
- ❑ Facilitating effective pooling of human and material resources
- ❑ Launching ambitious co-operative research schemes

ERRAC past results:

- ❑ Ensured widespread consensus of the Strategic Rail Research Agenda 2020 and updating the ERRAC Rail Business Scenario
- ❑ Assessing how current R&D programmes align with the SRRRA 2020
- ❑ Reviewing the light rail and metro system market sector in the 25 EU Member States and the suburban and regional landscape in Europe
- ❑ Proposing input for the EU's 6th and 7th RTD Framework Programme

5

ERRAC today

ERRAC is ruled by a share of Chairmanship between Supply Industries and Railways operators. Today it is chaired by Mr. Andrew McNaughton, Network Rail, supported by two Vice-Chairmen, Mr. Dan Otteborn – Bombardier Transportation – and Mr. Manuel Pereira – Technical University of Lisbon. ERRAC is a well established and recognised ETP that has achieved to build consensus between sector stakeholders

- Aim ETP (European Commission): European Technology platforms were set up as a stakeholder for a sector, led by industry, with the objective of defining medium to long-term research and technological objectives and laying down markers for achieving them.

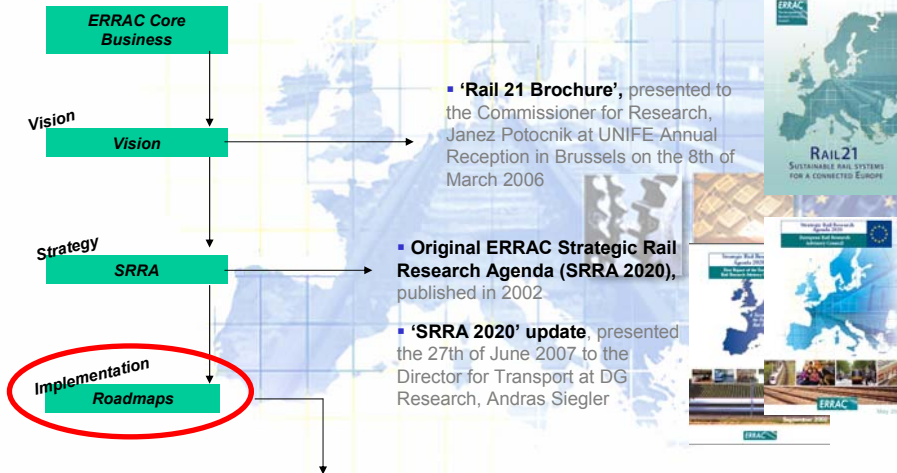


Implementation, market up-take of innovative applications to reach the SRRRA 2020 objectives is the next step that will be built out of the results of the project ERRAC-Roadmaps!

6

ERRAC- Roadmaps

ERRAC-Roadmaps will contribute to translate, monitor and disseminate to the whole European industry the strategic recommendations and guidelines of the SRRA 2020.



Implementation: the ROADMAPS

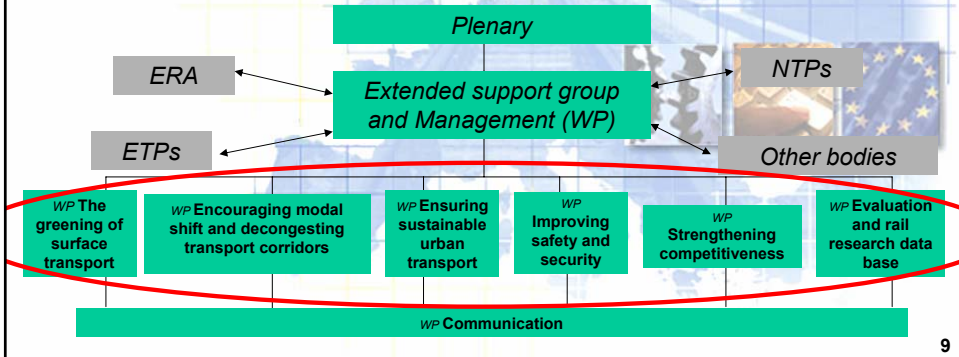


ERRAC- Roadmaps : the new Work Packages for the roadmaps building

Main priorities in the updated SRRA:

1. Energy and Environment
2. Personal Security
3. Test, Homologation and Safety
4. Competitiveness and enabling technologies
5. Strategy and Economics
6. Infrastructure

To better respond to the FP 7 Work Programs, it was thought best to “translate” these 6 priorities into the EC priorities for Transport Research (**Cross reference/Matrix**) + adding an *Evaluation and Rail research Database* and a *Management WP*.



ERRAC- Roadmaps : wide direct involvement from sector Companies and association representatives!

Participant no	Participant organisation name	Country
1. Co-ordinator	UIC	France
2.	UNIFE	Belgium
3.	EIM	Belgium
4.	CER	Belgium
5.	UITP	Belgium
6.	NETWORK RAIL	UK
7.	BOMBARDIER	Germany
8.	SIEMENS	Germany
9.	MERMEC	Italy
10.	SNCF	France
11.	NEWRAIL - Newcastle University	UK
12.	TRENITALIA	Italy
13.	BANVERKET	Germany
14.	ITALCERTIFER (ITCF)	Italy
15.	Ansaldo STS	Italy
16.	EFRTC	Luxemburg
17.	IST	Portugal
18.	Corus Rail	United Kingdom

ERRAC and ERRAC-Roadmaps objectives and activities for the future

- ❑ Producing and approving detailed roadmaps for the correct implementation of the SRRA and addressing technological and political (EU level) challenges
- ❑ Market uptake evaluation of past rail R&D projects mainly funded in the FP5 and FP6.
- ❑ Link with other European Technological Platforms
- ❑ Work with National Technological Platforms
- ❑ Maintaining ERRAC as the rail advisory body through the lifetime of the EC framework programs
- ❑ Monitoring programs and cooperate with relevant international organizations outside Europe
- ❑ Encouraging and nurturing investment in rail research at a private and public level.

ERRAC impacts

- ❑ **ERRAC R&D priorities feed the European Commission Transport Framework Programmes**
 - ❑ As example ERRAC presented to the DG Research on the 7th of May 2007 twelve R&D priorities for the FP7 2nd call: 4 out of 6 top priorities and 1 out of 6 lower priorities were translated in real topics in the call.
- ❑ **ERRAC studies with an impact on the market**
 - ❑ ERRAC developed « Suburban and Regional Railways Landscape in Europe »; « Light Rail and Metro Systems in Europe » and « A comparison of Member State public research programmes with the ERRAC SRRA 2020 ».
- ❑ **The Strategic Rail Research Agenda 2020 is the document influencing decisions at EU Institutions and Members States level**

Thank you for your attention!

Questions?

