

Building the future of rail together!

HOW UNIFE MEMBERSHIP
CAN BENEFIT YOU

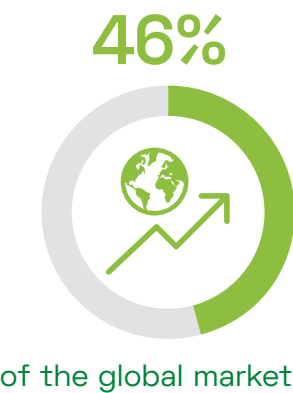
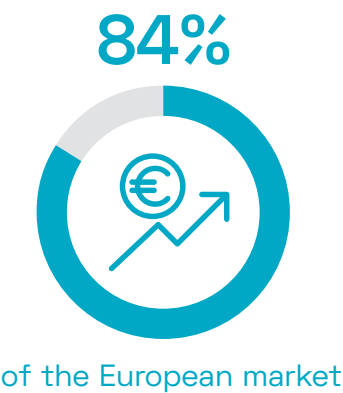
unife 
THE EUROPEAN RAIL INDUSTRY 

Who We Are

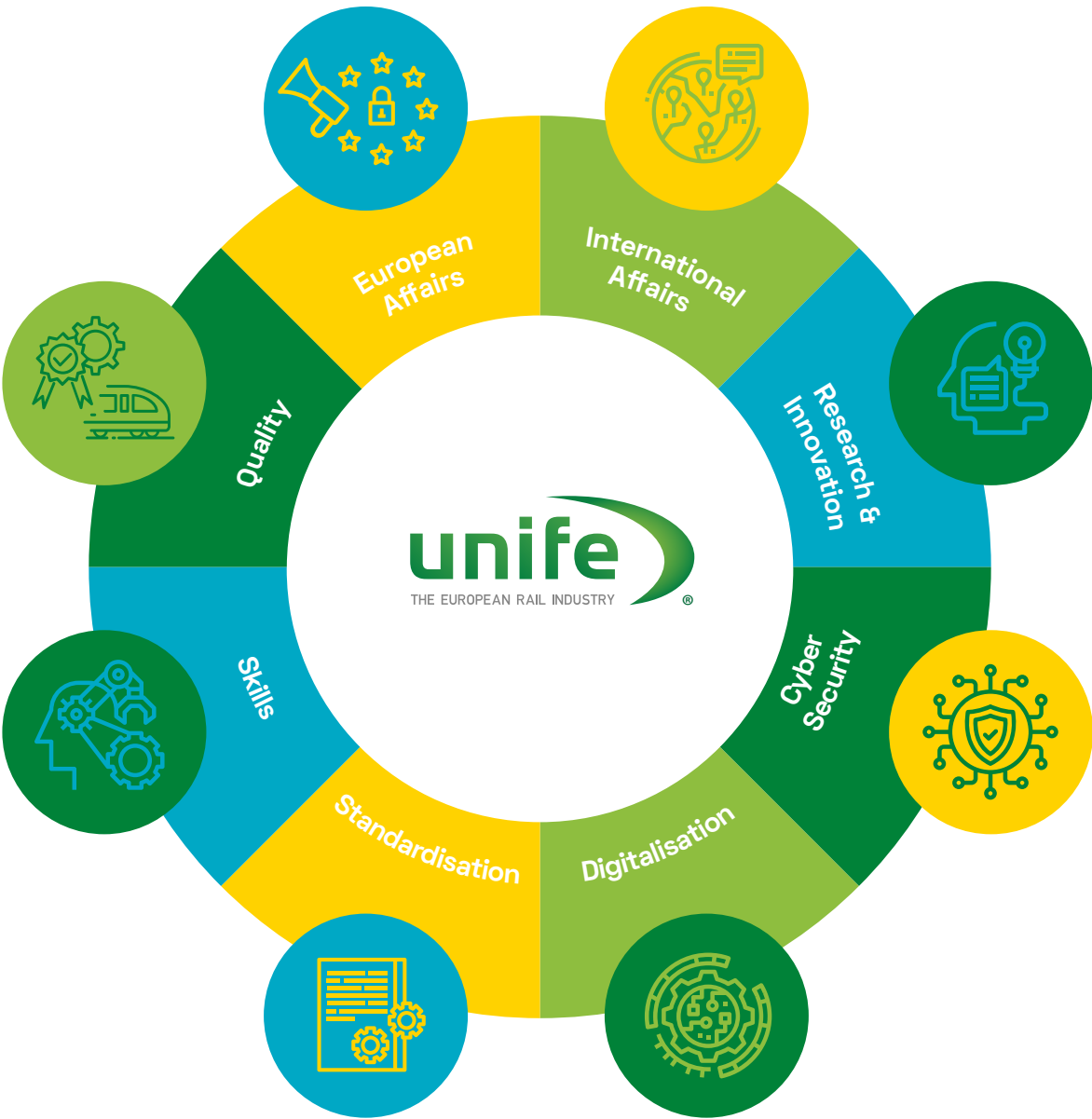
We gather



Making up



Working on



With who we work among many others

EU institutions



Rail organisations



Industry/Trade



Standardisation



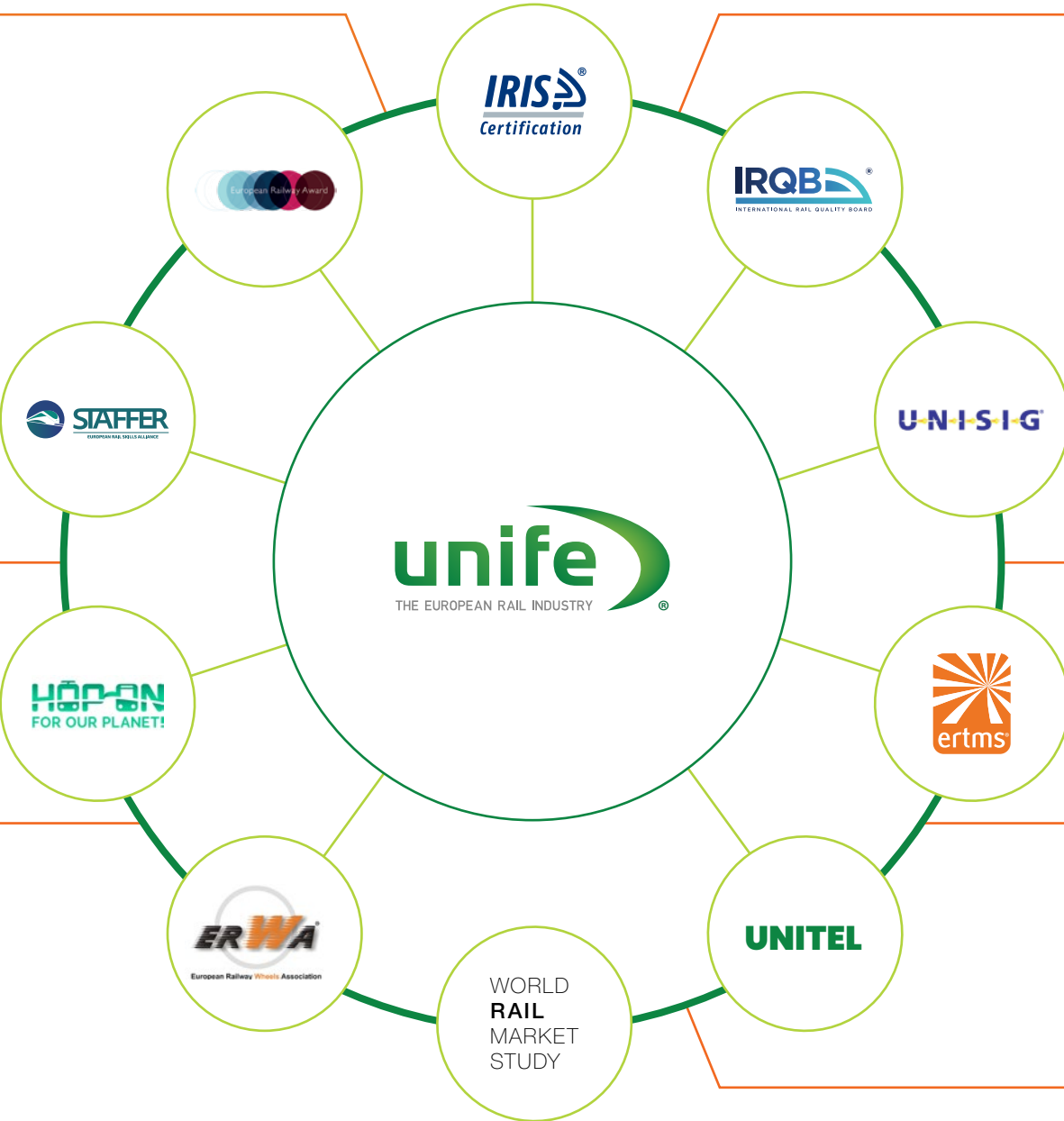
Others



Research

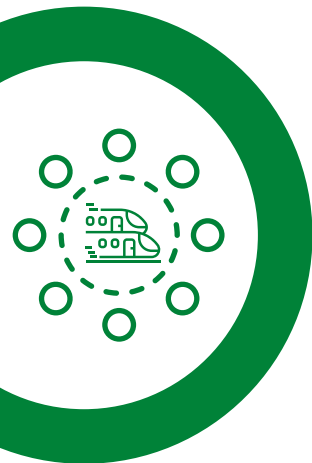


Events



Benefits and Services

Why should you apply to become a UNIFE Member?



Build the business relationships of tomorrow and grow your outreach through specialised consortia designed to target specific interests

- ▶ Get exclusive invitations to **VIP networking events** & the possibility to make profitable business-to-business introductions
- ▶ Have the unique ability to **exchange directly** with the main European sector experts responsible for dossiers crucial to your business' success
- ▶ Earn unique **brand recognition** and have access to targeted advertising opportunities.
- ▶ Gain **credibility as a rail industry leader**

Over **17 interviews** and **196 Articles** were published including UNIFE in 2022

Over **10 platforms** supported/led by UNIFE!

Deepen your railway knowledge

- ▶ **Speak up** and promote your priorities within the European rail supply industry
- ▶ Attend **thematic workshops/trainings** organised by UNIFE staff with the support of high-level special guests
- ▶ Learn more about the **skills of the future** and how to encourage young people to work on the rail sector
- ▶ Find out how your organisation can be a leading figure in transport sector gender equity through the **'EU Platform for Change - Women in Transport'**

Multiple **monthly virtual events/workshops** are organised by UNIFE





Tap into EU funding for R&I

- ▶ Actively contribute to **the next rail system iteration** and speed up its **digitalisation**
- ▶ Know more about how **Europe's Rail Joint Undertaking and Horizon Europe** will support the development of emerging rail technologies
- ▶ Be supported in bid management activities including **the monitoring of funding opportunities and preparation of offers**
- ▶ Get involved in **EU-funded research projects** that contribute to the technical harmonisation of railway systems

UNIFE has an **impressive success ratio** regarding the rail research projects proposals submitted for EU funding

UNIFE leads **25 projects** and supports more than **50 other projects**



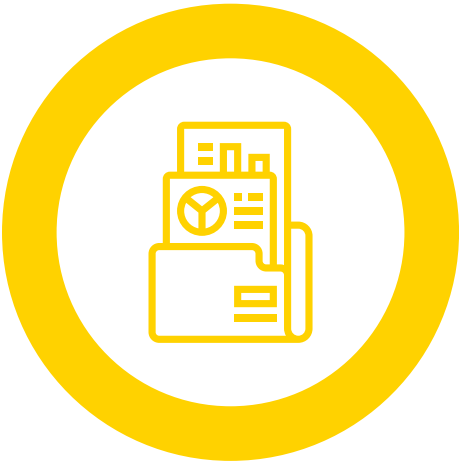
Be recognised for the quality of your business

- ▶ **Improve quality** in the rail supply industry
- ▶ **Differentiate yourself** from your competitors
- ▶ Have **direct access** to the IRIS Management Centre to satisfy all your IRIS Certification® needs
- ▶ Attend **Quality Monthly webinars** and get access to the **IRIS Guidelines** via the **IRQB**
- ▶ Receive **exclusive IRIS Certification® trainings**

IRIS Certification® has now awarded more than **2300 certificates** in over **50 countries** and is continuing to expand

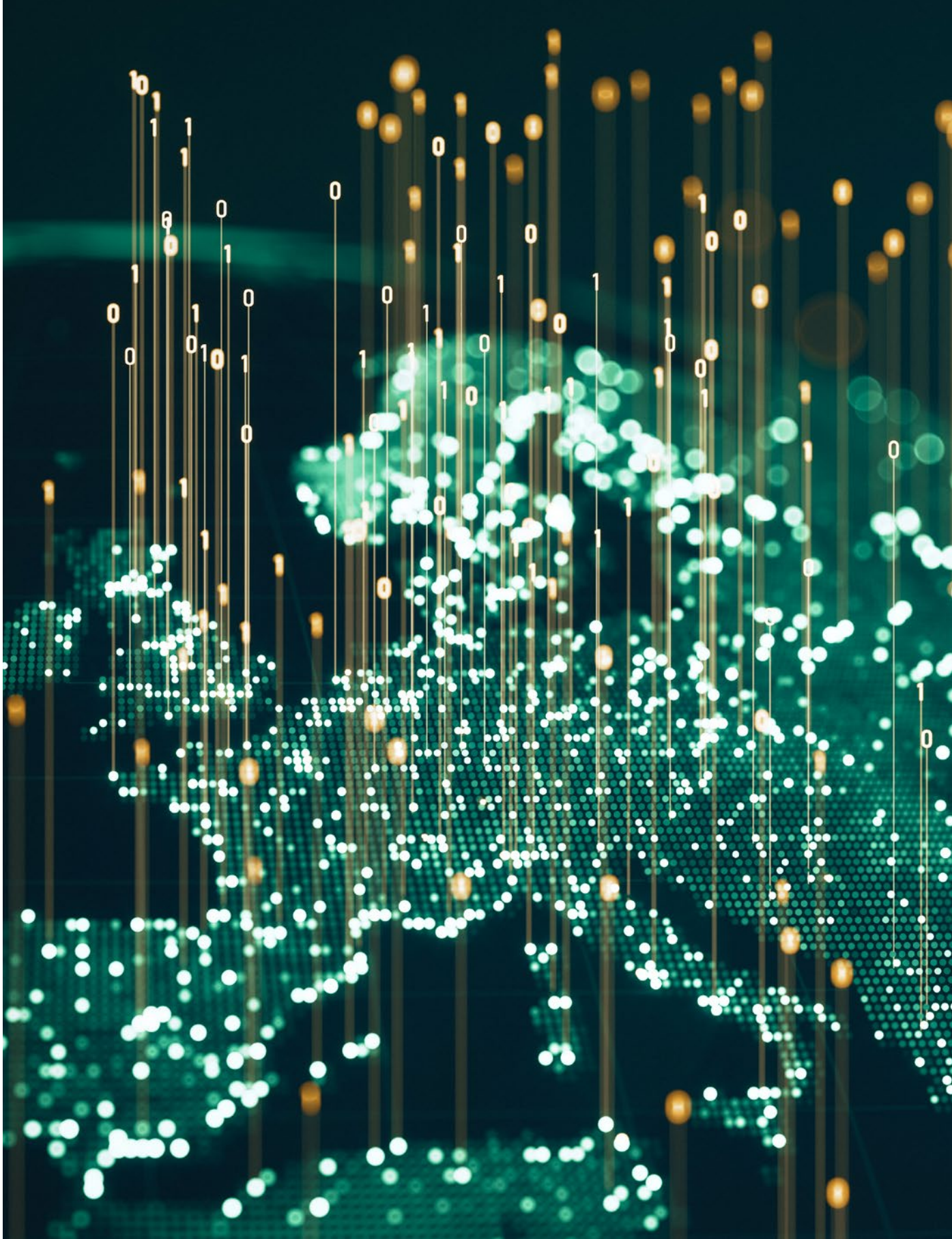
Stay ahead of EU and global market trends

- ▶ **Engage with decision makers** to create a policy and investment framework favourable to rail transport in Europe and beyond
- ▶ Stay informed about **investment and funding programmes inside and outside of the EU**
- ▶ Keep up to date with the **latest trade agreements and developments** that can help you thrive your business
- ▶ Get a **free copy of UNIFE World Rail Market Study**
- ▶ Receive regular **rail intelligence** detailing the most important updates on European legislation **impacting your business and customised information compiled by our 23 Working Groups and 22 Committees**



Stay on top of technical regulations and standards

- ▶ Have **unique foresight on upcoming technical regulatory changes** to help you plan your business strategies accordingly
- ▶ **Contribute directly to the development of future legislation** and technical frameworks that impact our sector
- ▶ Have access to a direct channel to the **EU Agency for Railways (ERA), CEN/CENELEC, and the International Standardisation Organisation (ISO)**
- ▶ Contribute to maintain and develop the technical **ERTMS specifications (including FRMCS)** in close cooperation with **ERA** and **Europe's Rail Joint Undertaking**



Your immediate advantages

How will UNIFE Membership benefit your business?

Business relationships and outreach

- ▶ Attend our yearly **General Assembly**, where UNIFE and its Members convene to assess the track ahead for our industry and plan our association's future activities
- ▶ Participate in our **Annual Reception and European Railway Award Ceremony**, an event that marks the beginning of rail's year and recognises individuals, companies or projects that have contributed to the development of the European rail sector
- ▶ Join **UNIFE Committees and Working Groups** that you consider to be most relevant for your business
- ▶ Establish a link with **Railway Undertakings and Infrastructure Managers**, bringing you into contact with all elements of the rail ecosystem

With over **500 people** attending our events, UNIFE offers many opportunities throughout the year for **networking**

Railway knowledge

- ▶ Inform our day-to-day advocacy priorities by communicating your **key issue areas** and defining our supporting pillars
- ▶ Access great **learning opportunities** in the form of informative sessions organised by UNIFE's staff with the support of high-level special guests from the sector that are ready to share their valuable knowledge and unique expertise
- ▶ Learn how to **encourage young people to pursue rewarding rail sector careers** by appealing to their eco-consciousness, tech abilities and professional ambitions

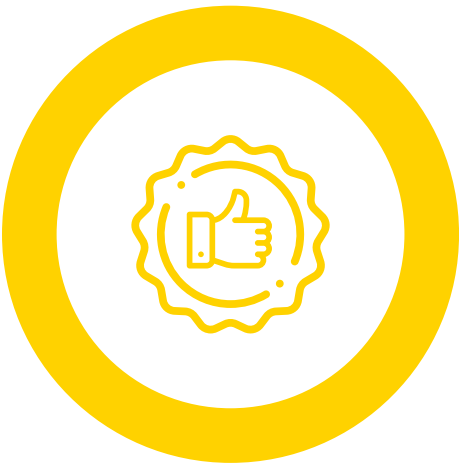
Our events and workshops are focused on **key areas** like **rail investment, the EU Green Deal, global leadership, skills for the rail industry, digitalisation** and much more



EU funding for R&I

- ▶ Be advised on all **R&I opportunities** at the European Level, including updates on **Horizon Europe, Europe's Rail** and other EU programmes in satellite technology, cybersecurity, digitalisation and more
- ▶ Have the chance to receive EU funding for **prototyping and testing** in laboratories and real environments
- ▶ **Cooperate with current and prospective customers** on new solutions to be implemented later on the rail network
- ▶ Stay at the **forefront of future technologies**

UNIFE is **the leading organisation** when it comes to coordinating EU funded rail research projects



Quality of your business

- ▶ Be a part of shaping a culture of quality in the rail supply industry through **IRIS Certification®** and the **International Rail Quality Board (IRQB)**
- ▶ Get **direct training** from the **IRIS Management Centre** about IRIS Certification® to help you prepare to achieve the highest performance level

80% of companies awarded IRIS Certification® are **SMEs**. IRIS' success has been made possible through our partnership with **17 IRIS-approved Certification Bodies**, representing around **300 IRIS-approved auditors operating in 30 languages**

EU and global market trends

- ▶ Receive privileged access to forecasted business developments with the **UNIFE World Rail Market Study**
- ▶ Be well positioned and represented at the **European Institutions**
- ▶ Help shape a favourable **policy framework** for rail
- ▶ Get early intelligence on **EU funded programmes** inside & outside of Europe

Our myriad political and technical dossiers deal with a wide range of topics such as **technical and regulatory standards, sustainability, digitalisation, industrial policies, trade, access to markets, public procurement, EU funding and investment programmes, research & innovation and skills**



Technical regulations and standards

- ▶ Contribute to the creation of a favourable **rail regulatory framework**
- ▶ Be privy to **comprehensive and exclusive briefings** on the most important developments pertaining to our sector
- ▶ Enhance your standing with key EU **technical decision makers**



Become a UNIFE Member

How can I apply for UNIFE Membership?

Any company willing to become a UNIFE Member is invited to fill in an official **application form**, which can be found on our website. This will then be sent to the UNIFE Strategy Committee for assessment.

The Committee will provide a preliminary review of the application before it is passed to the UNIFE Presiding Board for a decision. Finally, the plenary at the annual UNIFE General Assembly will formally ratify your company and others like it for new Membership.

How much does membership cost?

An interested company can learn more about applicable fees by submitting a simple **Membership Information Enquiry**. This form does not constitute any commitment on the part of your company and the information provided will be kept confidential.

On the basis of the rail turnover reported this document, we will be able to very quickly communicate to you the amount of your annual Membership fees ahead of your decision to officially apply for membership.



Maria Romero
Membership Manager

maria.romero@unife.org
+32 2 642 23 26

UNIFE Members

A unique network of over 100 member companies from across Europe and of all sizes – one-third are SMEs - and 13 National Associations

Full Members





































































































































































Associate Members



























We are The European Rail Supply Industry

Every day, UNIFE fights **to promote European policies and programmes favourable to rail, works towards an interoperable and efficient European railway system, ensures the European Rail Supply Industry's continued global leadership** through advanced research, innovation and quality and **provides its members with strategic and operational knowledge**. We advocate for our shared mode of transportation to serve as the backbone of tomorrow's sustainable, safe, reliable and accessible mass transit paradigm. **As Europe is beset by concurrent public health and security crises, keeping the rail industry united is key to tackling the economic strains caused by these events.**



@UNIFE



UNIFE - The European Rail Supply Industry Association



+32 2 626 12 60



general@unife.org



Avenue Louise 221 • B-1050 Brussels, Belgium

unife.org

